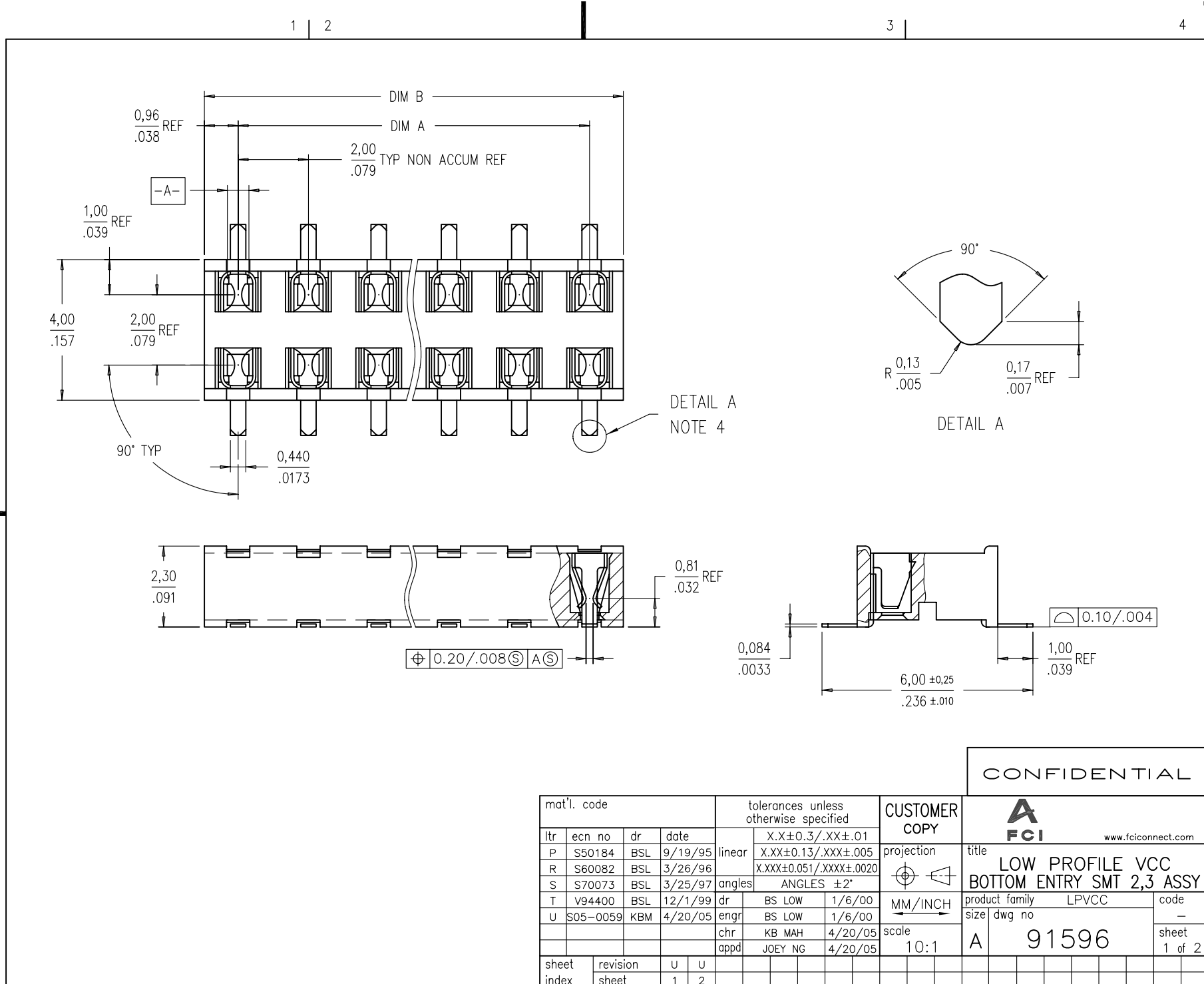


Tous droits strictement reserves. Reproduction ou communication a des tiers interdite sous quelque forme que ce soit sans autorisation ecrite du propriétaire. Propriete de c FCI. Droits de reproduction FCI.

All rights strictly reserved. Reproduction or issue to third parties in any form whatever is not permitted without written authority from the proprietor. Property of FCI. Copyright FCI.



CONFIDENTIAL

mat'l. code				tolerances unless otherwise specified			CUSTOMER COPY		FCI www.fciconnect.com	
ltr	ecn no	dr	date	linear	X.X±0.3/.XX±.01		projection	title		
P	S50184	BSL	9/19/95		X.XX±0.13/.XXX±.005			LOW PROFILE VCC		
R	S60082	BSL	3/26/96		X.XXX±0.051/.XXX±.0020			BOTTOM ENTRY SMT 2,3 ASSY		
S	S70073	BSL	3/25/97	angles	ANGLES ±2°		MM/INCH	product family	LPVCC	code
T	V94400	BSL	12/1/99	dr	BS LOW	1/6/00		size	dwg no	sheet
U	S05-0059	KBM	4/20/05	enr	BS LOW	1/6/00		A	91596	1 of 2
				chr	KB MAH	4/20/05	scale			
				appd	JOEY NG	4/20/05	10:1			
sheet index	revision sheet	U	U							
		1	2							

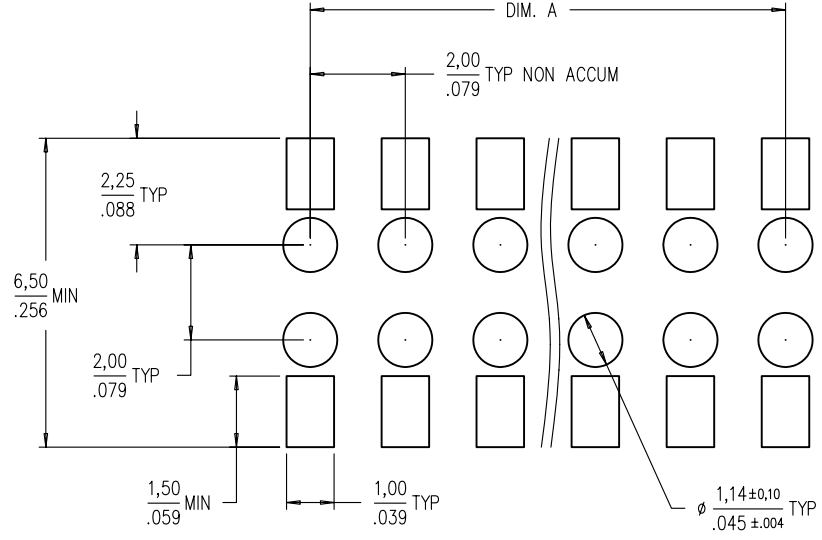
cage code 22526

Tous droits strictement reserves. Reproduction ou communication a des tiers interdite sous quelque forme que ce soit sans autorisation ecrite du proprietaire. Propriete de c FCI. Droits de reproduction FCI.

All rights strictly reserved. Reproduction or issue to third parties in any form whatever is not permitted without written authority from the proprietor. Property of FCI. Copyright FCI.

PRODUCT NO	POSITIONS	DIM. A	DIM. B
91596-X04	2 X 2	2,00/,079	3,92/,154
-X06	2 X 3	4,00/,158	5,92/,233
-X08	2 X 4	6,00/,236	7,92/,312
-X10	2 X 5	8,00/,315	9,92/,391
-X12	2 X 6	10,00/,394	11,92/,469
-X14	2 X 7	12,00/,472	13,92/,548
-X16	2 X 8	14,00/,551	15,92/,627
-X18	2 X 9	16,00/,630	17,92/,706
-X20	2 X 10	18,00/,709	19,92/,784
-X22	2 X 11	20,00/,787	21,92/,863
-X24	2 X 12	22,00/,866	23,92/,942
-X26	2 X 13	24,00/,945	25,92/1,020
-X28	2 X 14	26,00/1,024	27,92/1,099
-X30	2 X 15	28,00/1,102	29,92/1,178

CONTACT AREA PLATING OPTIONS	
0	= 0,20um/8u" Au CONTACT AREA.
1	= 0,76um/30u" Au CONTACT AREA.
3	= 0,38um/15u" Au CONTACT AREA.



RECOMMENDED PAD LAYOUT

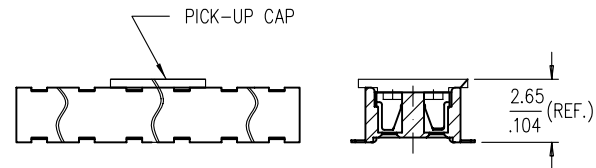
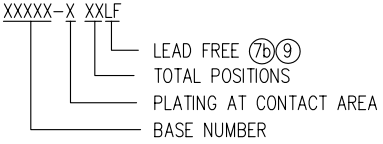


FIG. 1
NOTE 6 (b) & (d)

NOTES :

- 1 HOUSING MAT'L : HIGH TEMP PLASTIC.
- 2 TERMINAL MAT'L : BeCu.
- 3 TERMINAL RETENTION 0,5 Kg/1,1 Lbs.
- 4 'V' CUT OPTIONAL - MANUFACTURING PROCESS OPTION.
- 5 PRODUCT DESCRIPTION CODE :



- 6 PACKAGING :
 - (a) XXXXX-XXX --- STD PACKAGING IN TUBE.
 - (b) XXXXX-XXXTR --- TAPE AND REEL (CONDUCTIVE) PACKAGING WITH PICK-UP CAP (SEE FIG 1).
 - (c) XXXXX-XXXTRN --- TAPE AND REEL (CONDUCTIVE) PACKAGING WITHOUT PICK-UP CAP.
 - (d) XXXXX-XXXCR --- TAPE AND REEL (NON-CONDUCTIVE) PACKAGING WITH PICK-UP CAP (SEE FIG 1).
 - (e) XXXXX-XXXCRN --- TAPE AND REEL (NON-CONDUCTIVE) PACKAGING WITHOUT PICK-UP CAP.
- 7 SOLDER TAIL PLATING:
 - a) SOLDER TAIL OF P/N: 91596-XXX IS TIN/LEAD PLATED.
 - b) SOLDER TAIL OF P/N: 91596-XXXLF IS 100% MATTE TIN PLATED.
- 8 THE HOUSING WILL WITHSTAND EXPOSURE TO 255° C PEAK TEMPERATURE FOR 10 SECONDS IN A CONVECTION, INFRA-RED OR VAPOR PHASE REFLOW OVEN.
- 9 THIS PRODUCT MEETS EUROPEAN UNION DIRECTIVES AND AND OTHER COUNTRY REGULATIONS AS DESCRIBED IN GS-22-008.

CONFIDENTIAL

mat'l. code				tolerances unless otherwise specified			CUSTOMER COPY		FCI www.fciconnect.com	
ltr	ecn no	dr	date	linear	X.X±0.3/.XX±.01		projection	title		
U					X.XX±0.13/.XXX±.005			LOW PROFILE VCC		
				angles	X.XXX±0.051/.XXX±.0020			BOTTOM ENTRY SMT 2,3 ASSY		
				dr	BS LOW	1/6/00	MM/INCH	product family	LPVCC	code
				engr	BS LOW	1/6/00		size	dwg no	sheet
				chr	KB MAH	4/20/05		A	91596	2 of 2
				appd	JOEY NG	4/20/05		scale	10:1	
sheet index	revision sheet									

cage code 22526